

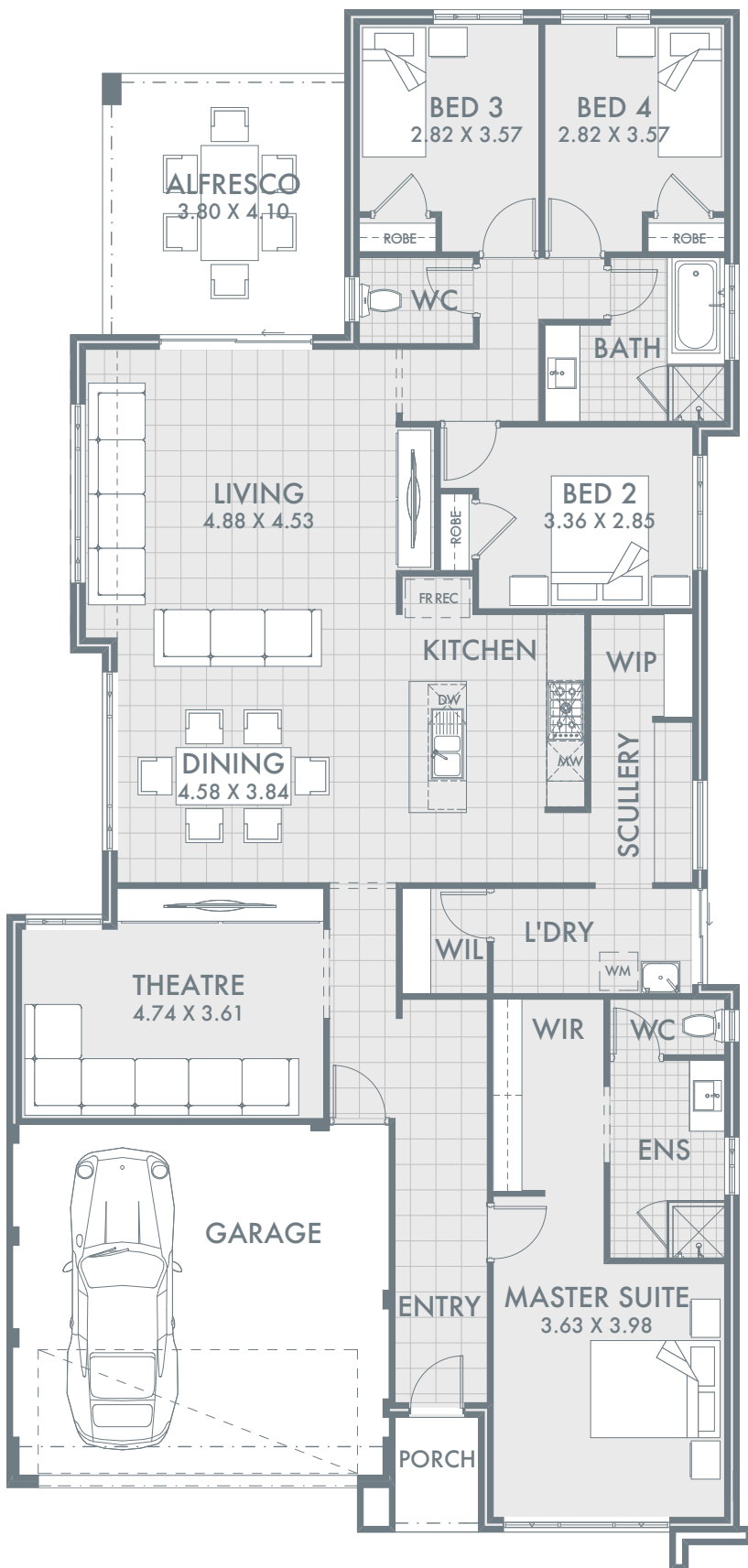


Pictures for illustration purposes only

An impressive four bedroom, two bathroom home that features an open plan living, kitchen and dining area located at the centre, plus a separate home theatre. The spectacular kitchen is completed with a scullery making this home an entertainers delight! The three minor bedrooms and shared bathroom are located in their own separate wing which creates the perfect hideaway for kids. The deluxe master suite is located at the front of the home featuring a spacious walk in robe and ensuite.



THE KHAZANA



24.49m

11.49m

LIVING AREAS

Indoor area	191.09m ²
Garage	34.30m ²
Alfresco	15.58m ²
Porch	2.77m ²
Total	243.74m²

INCLUSIONS

- Floor tiling, carpets and venetian blinds throughout
- Two colour render to front elevation
- Choice of 1 x 900mm or twin 600mm ovens
- 900mm gas cook top and range hood
- 2m high semi frameless glass doors to showers
- White China basins to vanities
- Flick mixer tapware throughout
- Soft close cupboards and drawers
- 6 month maintenance period
- 25 year structural guarantee

FOR **12.5m** WIDE LOTS



newchoice
homes

HOMES BUILT FOR *life*

newchoicehomes.com.au

4/325 Harborne St, Osborne Park WA 6017
Telephone +61 8 9201 7878